



MULTICAL® 603 & ULTRAFLOW®





MULTICAL® 603 & ULTRAFLOW®



> 60 °C



230 VAC



16/25/40 bar



	04
	05
	07
	14
	15
	20
	22
	23
	27



http://static.kamstrup.dk/hardlink/userguides/gb_mc603.htm



<http://products.kamstrup.com/?goto=627>



<http://products.kamstrup.com>



MULTICAL® 603 & ULTRAFLOW®

1/2

E1 MID ✓ EN1434 ✓
 θ : 2 °C...180 °C $\Delta\theta$: 3 K...178 K ✓

E3 DK-BEK 1178 ✓ EN1434 ✓
 θ : 2 °C...180 °C $\Delta\theta$: 3 K...178 K ✓

E1 E3 EN1434 ✓
 θ : -40 °C...140 °C $\Delta\theta$: 3 K...178 K ✓

ULTRAFLOW®

θ_q : 2 °C...130 °C ✓

θ_q : 15 °C...130 °C ✓

Ü E1 ✓ E2 ✓

M1 ✓ M2 ✓

5 °C...55 °C ✓

> 25 CM

Home icons: ✓ (green), ✗ (red)

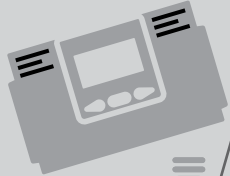
Water drop icon: ✓ (green)



MULTICAL® 603 & ULTRAFLOW®



2/2



- Data + : HC-003-10 ✓
- Data + : HC-003-11 ✓
- M-Bus + : HC-003-20 ✓
- M-Bus + : HC-003-21 ✓
- wM-Bus + : HC-003-30 ✓

F 23



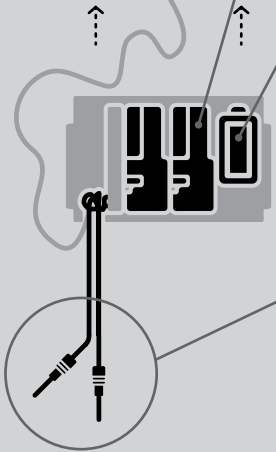
- 1xD: HC-993-02 ✓
- 230 VAC high power: HC-993-03 ✓
- 24 VAC/VDC high power: HC-993-04 ✓
- 230 VAC: HC-993-07 ✓
- 24 VAC: HC-993-08 ✓
- 2xA: HC-993-09 ✓



- MULTICAL® 603-A - Pt100 x2 ✓
- MULTICAL® 603-B - Pt100 x4 ✓
- MULTICAL® 603-C/E/F - Pt500 x2 ✓
- MULTICAL® 603-D/G/H - Pt500 x4 ✓

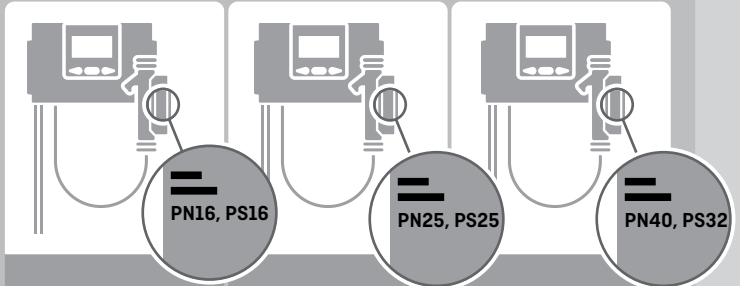


- MULTICAL® 603-M - Pt500 x2 ✓





DN15 - DN125



PN16, PS16

PN16, PS16 < DN100

PN16, PS16

PN25, PS25

PN25, PS25

PN25, PS25

PN40, PS32

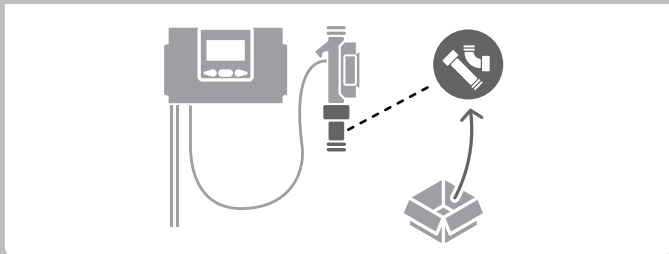
PN40, PS32

PN40, PS32

PN16, PS16

PN25, PS25

PN40, PS32





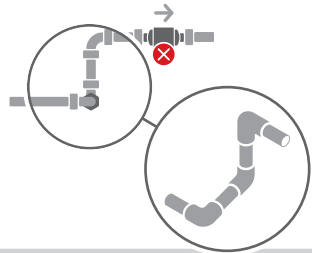
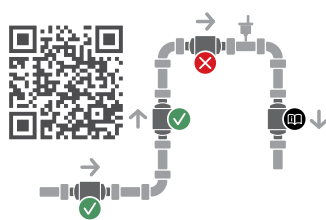
ULTRAFLOW®

11 -		V2
9 +		
69 ↩		
11 -		V1
9 +		
10 ↩		

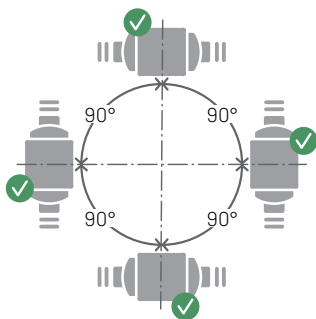


V1		11 -
		10 ↩
V2		11 -
		69 ↩

V1		11B -
		10B +



ULTRAFLOW®



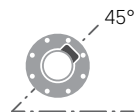
⊕ - qp 0.6...2.5 m³/h



⊕ - qp ≥ 3.5 m³/h

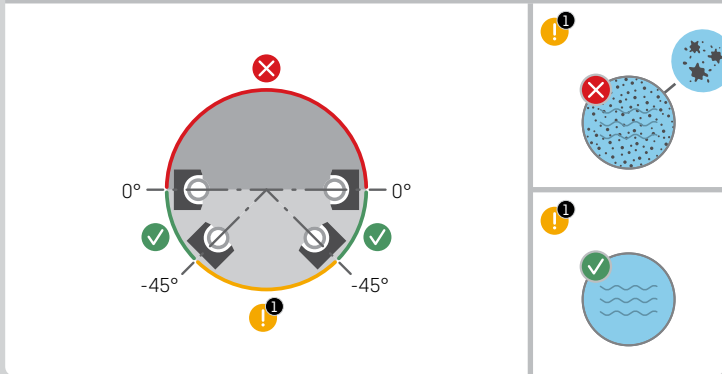


⊕ - qp ≥ 1.5 m³/h





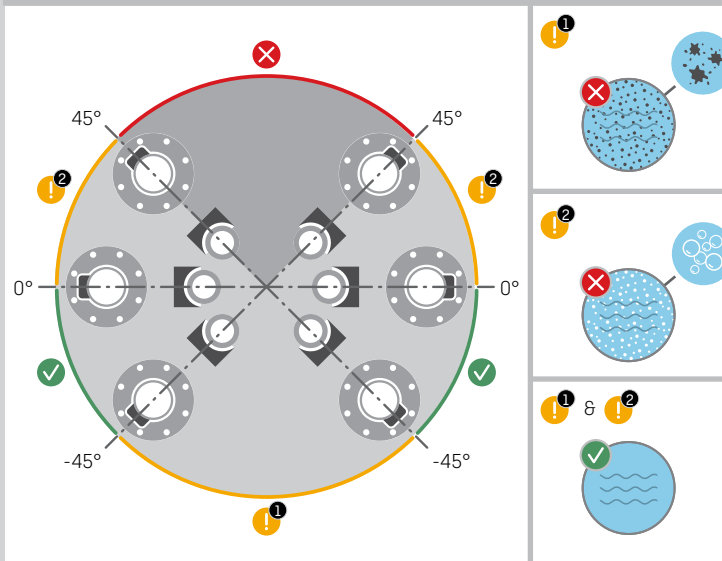
⌀ - qp 0.6...2.5 m³/h



⌀ - qp ≥ 1.5 m³/h

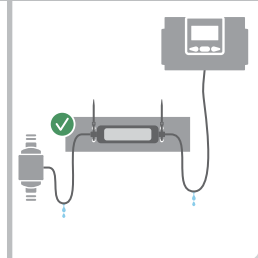
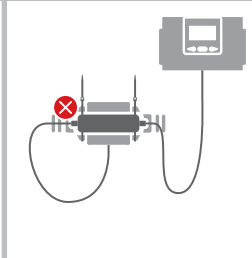
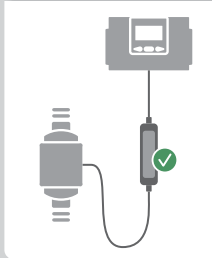


⌀ - qp ≥ 3.5 m³/h

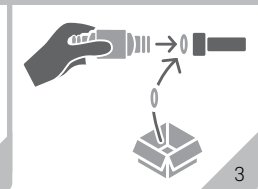
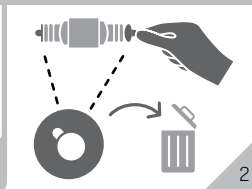
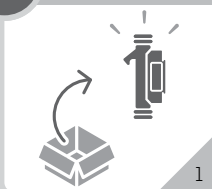
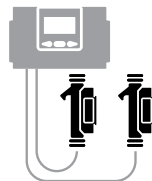


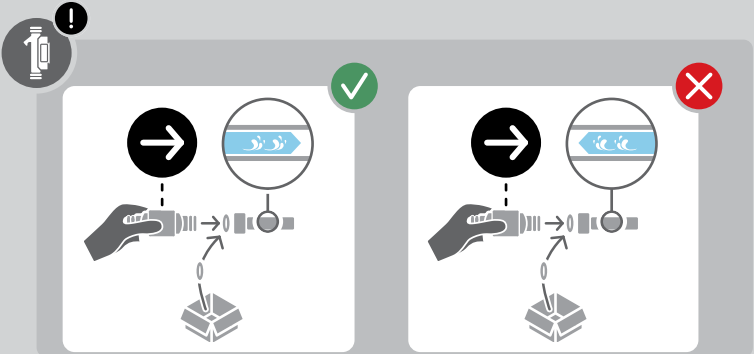
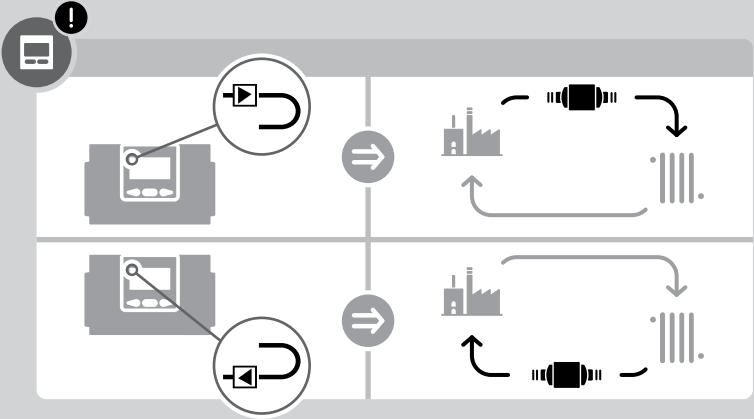


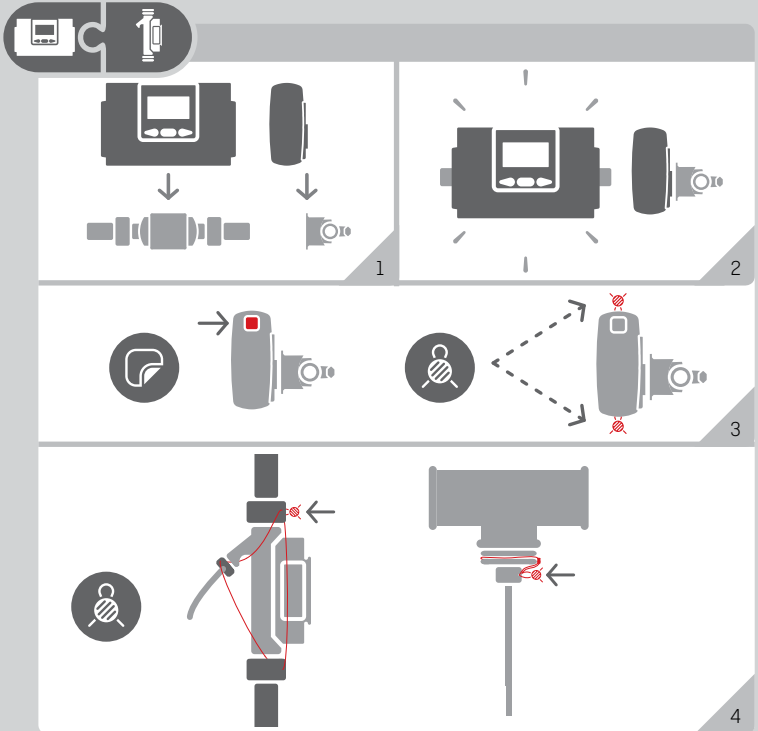
ULTRAFLOW® 44



V1 + V2

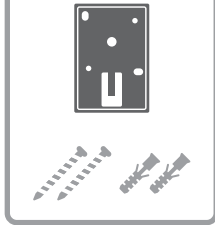




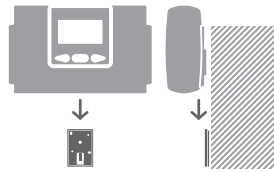




3026207.A



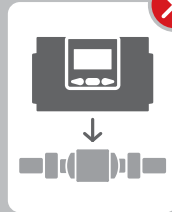
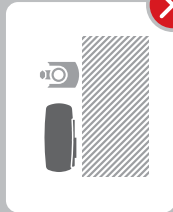
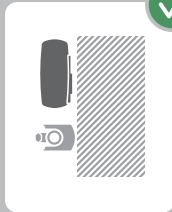
1

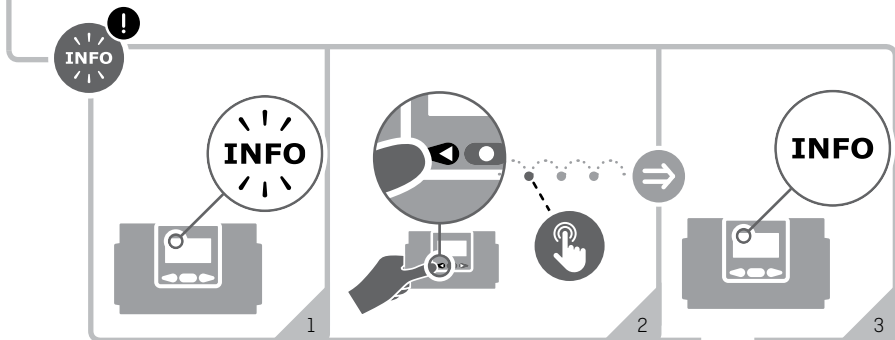


2



3





1/5

Info	t1	t2	t3	V1	V2	In-A	In-B	
1								
2								
9								



Info	t1	t2	t3	V1	V2	In-A	In-B	
	1							t1 > 185 °C
		1						t2 > 185 °C
			1					t3 > 185 °C
	2							t1 < 0 °C
		2						t2 < 0 °C
			2					t3 < 0 °C
	9	9						$\Delta t (t1-t2) = \text{X}$



Info	t1	t2	t3	V1	V2	In-A	In-B	
				1				V1:
					1			V2:
				2				V1: $\rho/l = \text{X}$
					2			V2: $\rho/l = \text{X}$
				3				V1:
					3			V2:
				4				V1:





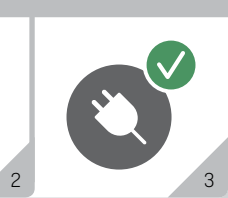
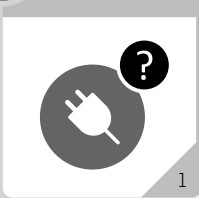
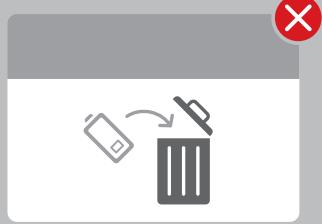
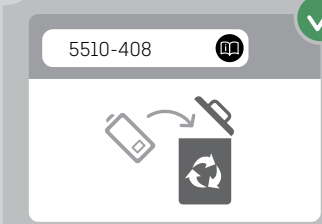
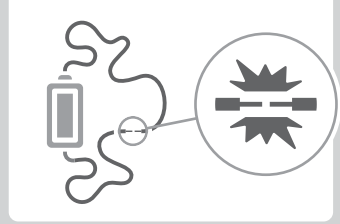
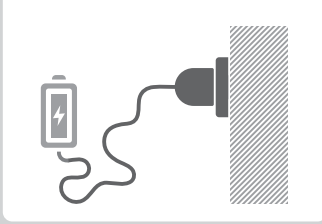
Info	t1	t2	t3	V1	V2	In-A	In-B
					4		
				6			
				6			
				7			
				7			
				8			
				8			



Info	t1	t2	t3	V1	V2	In-A	In-B
						7	A2:
						8	A1:
						9	A1/A2:
						7	B2:
						8	B1:
						9	B1/B2:



1/2





230 VAC / 50 Hz / 1 W ✓



230 VAC / 50 Hz / 1 W

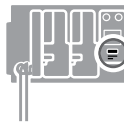
24 VAC / 50 Hz / 1 W ✓



24 VAC / 50 Hz / 1 W

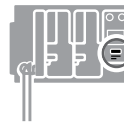
24 VAC/VDC / 50 Hz / 1 W

230 VAC ✓



230 VAC

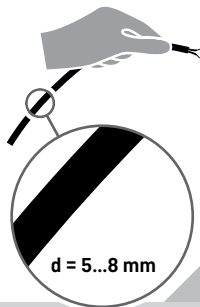
24 VAC ✓



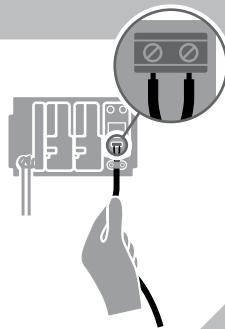
24 VAC



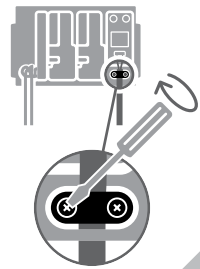
d = 5...8 mm ✓



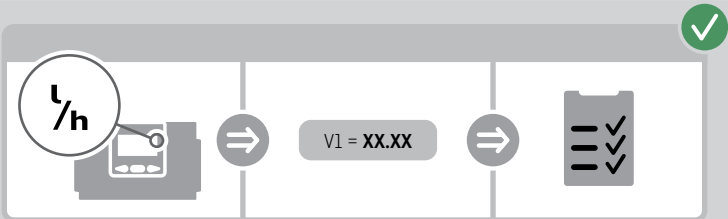
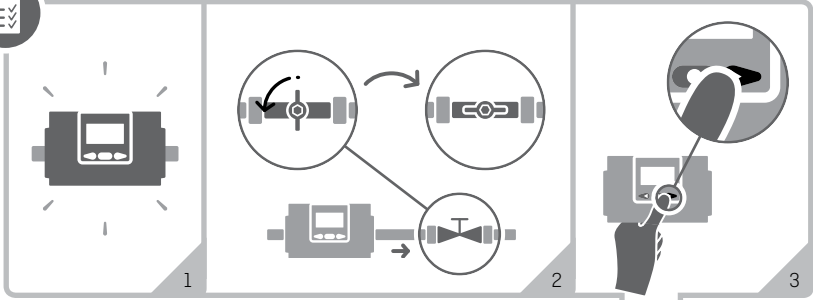
1



2

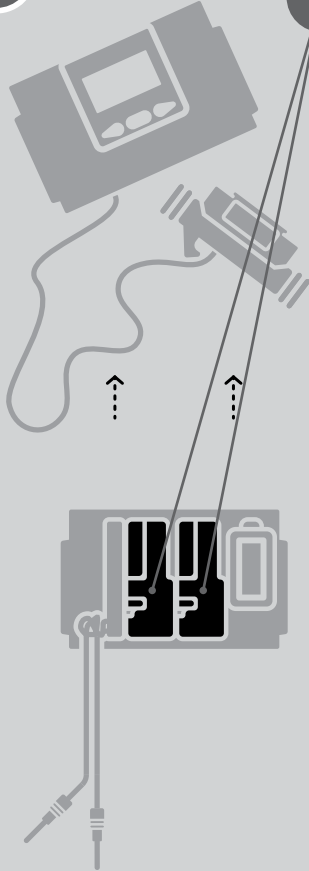


3





MULTICAL® 603 & ULTRAFLOW®



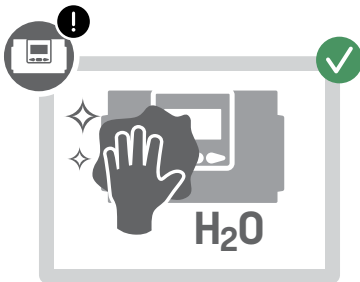
Data + In-A / In-B	: HC-003-10	✓
Data + Out-C / Out-D	: HC-003-11	✓
M-Bus + In-A / In-B	: HC-003-20	✓
M-Bus + Out-C / Out-D	: HC-003-21	✓
M-Bus	: HC-003-22	✓
wM-Bus + In-A / In-B	: HC-003-30	✓
wM-Bus + Out-C / Out-D	: HC-003-31	✓
linkIQ/wM-Bus + In-A / In-B	: HC-003-32	✓
linkIQ/wM-Bus + Out-C / Out-D	: HC-003-33	✓
Analog	: HC-003-40	✓
Analog In-A / In-B	: HC-003-41	✓
PQT Controller	: HC-003-43	✓
Kamstrup RF In-A / In-B	: HC-003-50	✓
Kamstrup RF GDPR In-A / In-B	: HC-003-51	✓
NB-IoT + In-A / In-B	: HC-003-56	✓
LON TP/FT-10 In-A / In-B	: HC-003-60	✓
BACnet MS/TP + In-A / In-B	: HC-003-66	✓
Modbus RTU + In-A / In-B	: HC-003-67	✓
2G/4G Network	: HC-003-80	✓
BACnet IP + In-A / In-B	: HC-003-81	✓
Modbus/KMP TCP/IP In-A / In-B	: HC-003-82	✓
READY TCP/IP, In-A / In-B	: HC-003-83	✓
Kamstrup RF HP In-A / In-B	: HC-003-84	✓
Kamstrup RF HP GDPR, In-A / In-B	: HC-003-85	✓

In-A / In-B

Out-C / Out-D

In 1 / In 2

Out 1 / Out 2



MULTICAL® 603 & ULTRAFLOW®

